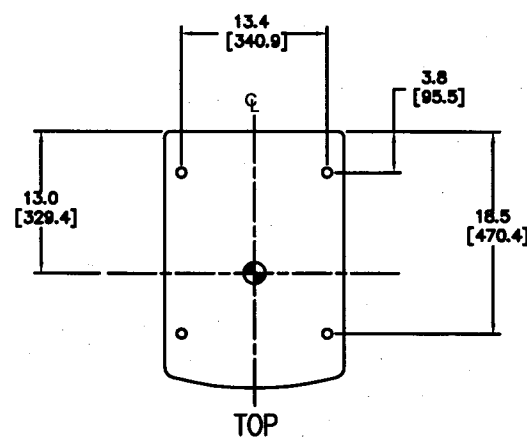


THESE DRAWINGS AND SPECIFICATIONS ARE THE PROPERTY OF JBL INCORPORATED. THEY ARE ISSUED IN STRICT CONFIDENCE AND SHALL NOT BE REPRODUCED OR USED AS THE BASIS FOR MANUFACTURE OR APPARATUS WITHOUT WRITTEN PERMISSION.

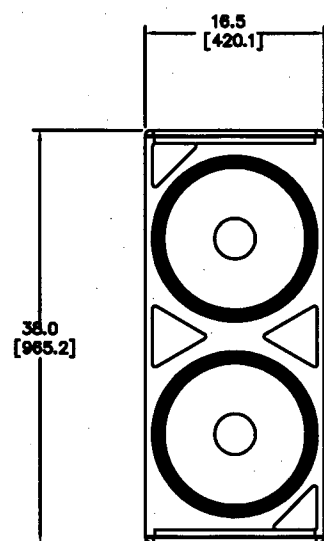
ALL MATERIAL SPECIFIED ON THIS DRAWING SHALL COMPLY WITH EUROPEAN DIRECTIVE 2002/96/EC. **2015**

REVISIONS					
CHG	LTR	DESCRIPTION	DEPT	D.C.	DATE
37950	A	RELEASE TO MARKETING	TH	(4)	3/23/16

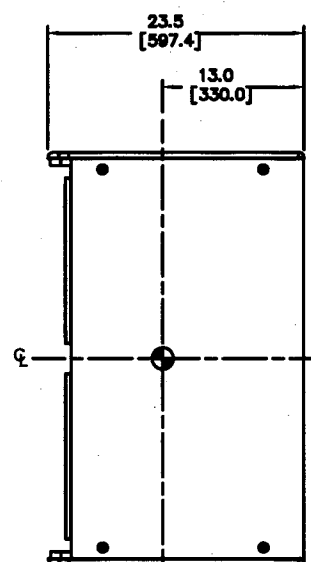
3/30/09



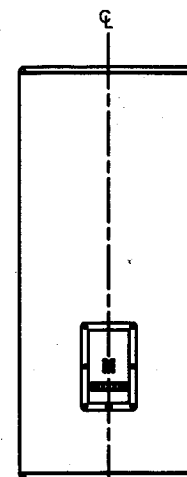
TOP



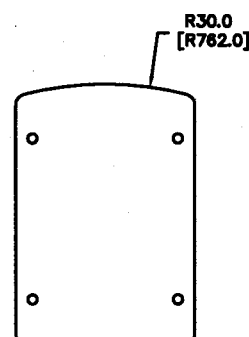
FRONT



SIDES



REAR



BOTTOM

1. FINISH: BLACK DURAFLEX.  
(WHITE AVAILABLE BY CUSTOM ORDER)
2. MATERIALS: 15MM BIRCH PLYWOOD.
3. GRILL: 14 GA. PERFORATED CRS, POWDER COATED BLACK WITH BLACK FOAM BACKING.
4. INPUT CONNECTORS: NEUTRIK NL4 IN PARALLEL WITH 4 POSITION TERMINAL STRIP.
5. COMPONENTS: LF - 2X 2265H-1
6. SUSPENSION POINTS: M10 THREADED SUSPENSION POINTS. 4X TOP, 4X BTM, 4X LEFT, 4X RIGHT.
7. WEIGHT: 36.7 Kg (81.0 LBS).
8. CENTER OF GRAVITY (CG)

NOTES: (UNLESS OTHERWISE SPECIFIED)

**TOLERANCES**  
(UNLESS OTHERWISE SPECIFIED)  
X.XX ± .063 INCH  
X.X ± .125 INCH  
ANGULAR TOLERANCE OF 0°±30'  
FRACTIONAL DIMENSIONS ± 1/32  
• DIMENSIONS ARE INCHES  
• ALL DIMENSIONS ARE FINISHED DIMENSIONS  
• DO NOT SCALE DRAWING

JBL PROFESSIONAL A Harman International Company Northridge, California 91329 U.S.A.	
TITLE CUSTOMER DRAWING: ASB6125	
SIZE A	DRAWING NO. 443462
SCALE NTS	REV A
SHEET 1 OF 1	